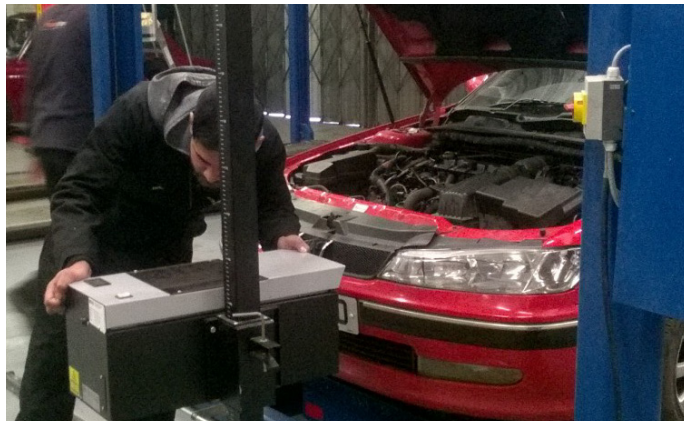


Light Vehicle Inspection Technician IMI Accrediation



Awarded by the IMI – Institute of the Motor Industry, the Light Vehicle Inspection Technician Accreditation is a recognised qualification as the pre-entry qualification to become an MOT tester.

IMI Accreditation training has 5 modules which focus on all vehicle systems including steering, suspension, wheels and tyres, body, corrosion, vehicle and braking systems. The training course develops skills around vehicle inspection techniques and engine & electrical diagnostics.

Once completed you will gain your Light Vehicle Inspection Technician Accreditation which is accepted as the first step towards achieving your MOT Testers Qualification.

Factfile

Aimed at:
Technicians who are involved in the inspection, maintenance and repair of light vehicles with ideally 3 years experience.

Length of course:
2 day course plus online assessment

Cost: £695 plus VAT

Location: Middleton

For enrolment:
Freephone: 0333 220 6645
Email: enquiries@mantralearning.co.uk

The programme

With the increasing complexity and sophistication of vehicles and a shortage of skilled individuals, there has never been a greater need for competent technicians

This two day intensive IMI course includes training and assessments for experienced mechanics to achieve the Approved Technician Accreditation – This formal accreditation allows you to meet entry requirements, sit the Level 2 Award in MOT Testing and become an MOT Tester.

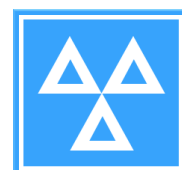
The IMI Accreditation Voluntary Scheme tests current competence of individuals working in the industry who are committed to an ethical code of conduct.

Desirable skills

The technician must be able to work unsupervised, ideally they should be in full time employment with at least 3 years experience to ensure they are familiar with the techniques for vehicle servicing, inspection and systems(s) diagnosis.

Benefits

Successful completion of the Light Vehicle Inspection Technician course will give you a valuable IMI Accreditation, get you onto the IMI Professional Register and also provides access to the next stage in your journey to becoming a qualified MOT Tester.



Light Vehicle Inspection Technician IMI Accrediation



Programme Units

AOM 071 Emissions System

- To demonstrate your knowledge, skill and ability in using the correct procedure to accurately measure and diagnose various exhaust emissions (petrol and diesel)
- To demonstrate your knowledge and skill in using a fault code scan tool to fault find an emission control and engine management system faults.

AOM 072 Electrical System

- To demonstrate your knowledge and ability in diagnosing vehicle electrical faults
- To understand the operation of electrical circuit and components
- To locate electrical components and circuits on a vehicle using technical data / wiring diagrams

AOM 073 Braking System – Inspection

- To demonstrate your knowledge and ability to inspect the braking system
- To demonstrate your knowledge and ability in using workshop test equipment such as measuring equipment, dedicated test equipment, etc

AOM 074 Steering & Suspension

- To demonstrate your knowledge and ability to carry out an inspection of the steering and suspension system
- To demonstrate your knowledge and skill to use the correct tools and procedures to diagnose faults in the suspension and steering system

AOM 076 Vehicle appraisal – Inspection

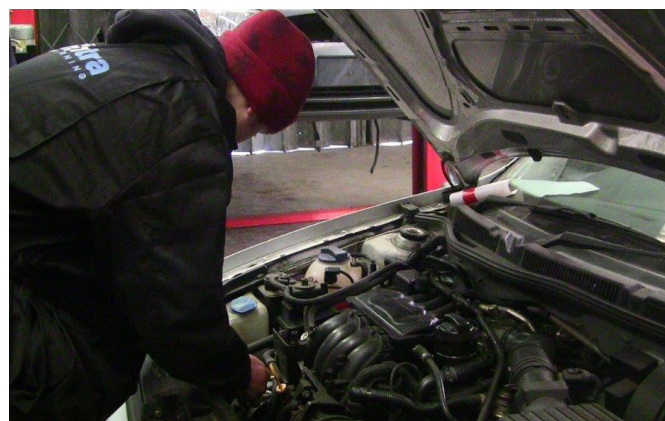
- To demonstrate your knowledge and ability to carry out an inspection to a vehicle
- To demonstrate your knowledge and ability to use the correct equipment, procedures and recording of the inspection

AOM 075 Vehicle Structure Inspection Assessment

Online assessment.

Programme delivery

All Mantra Learning Training Advisors are industry professionals who are specialists in the area in which they teach.



**For further information and
FREEPHONE**

0333 220 6646

www.mantralearning.co.uk